

YG-1 TOOLING SYSTEM

ACCESSORY & OTHERS



PULL STUD BOLT

PULL STUD BOLT & SPANNER

TOOL CLAMP

HEIGHT PRESETTER

COOLANT TUBE & SPANNER

TECHNICAL DATA : SHANK STANDARD

DIN 69871-SK / JIS B6339/MAS 403-BT / DIN 69893/ISO 12164-1-HSK

ANSI/ASME B5.50-CAT

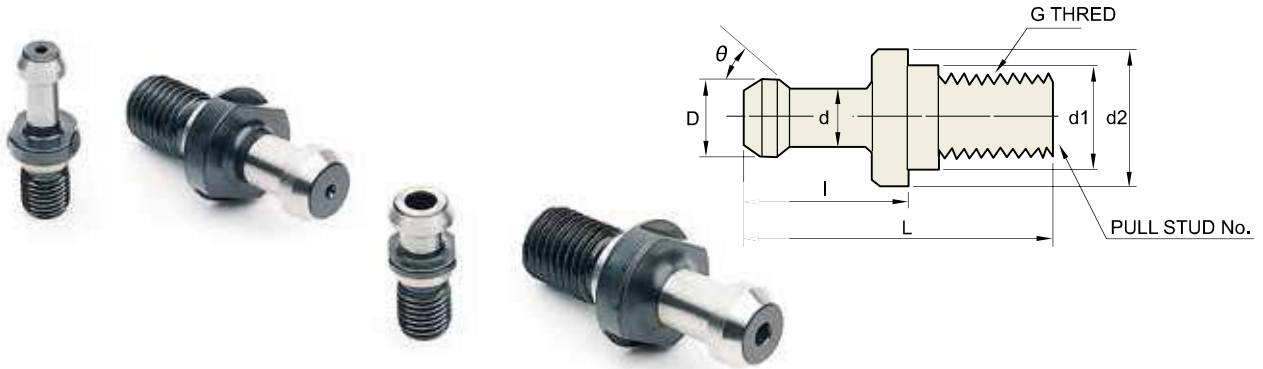
DIN 228 (MORSE TAPER) : TANG / SCREW TYPE





PULL STUD BOLT & SPANNER

ANZUGBOLZEN
BOULONS DE SERRAGE
TIRANTI PER MANDRINI UNIVERSALI
TIRANTES PARA PORTAHERRAMIENTAS

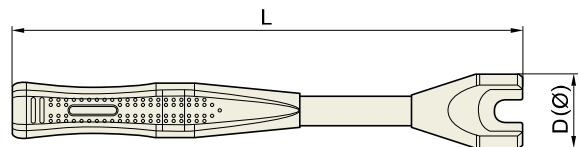


■ PULL STUD BOLT

Unit : mm

MODEL No.	EDP No.	D	d2	d1	d	L	l	G	O	TYPE
PS-1	P2775051	15	23	17	10	60	35	M16	45°	BT40- STANDARD TYPE
PS-2	P2775052	15	23	17	10	60	35	M16	60°	BT40- STANDARD TYPE
PS-805	P2775101	19	23	17	14	54	29	M16	75°	BT40
PS-806	P2775102	19	23	17	14	54	29	M16	75°	BT40 (Through Hole)
PS-5	P2775053	23	38	25	17	85	45	M24	45°	BT50- STANDARD TYPE
PS-6	P2775054	23	38	25	17	85	45	M24	60°	BT50- STANDARD TYPE
PS-16	P2775055	11	16.5	12.5	7	43	23	M12	45°	BT30- STANDARD TYPE
PS-17	P2775056	11	16.5	12.5	7	43	23	M12	60°	BT30- STANDARD TYPE
PS-0	P2506706	23	38	25	17	85	45	M24	90°	for BT50 OKK
PS-08	P2506703	15	23	17	10	60	35	M16	90°	for BT40 OKK
PS-P	P2775057	24	36	25	18	71	31	M24	90°	for BT50 MITISUI SEIKI
PS-P5	P2775058	15	23	17	10	50	25	M16	90°	for BT40 MITISUI SEIKI
PS-G41	P2775059	29	37	25	21	65.2	25.2	M24	45°	for BT50 MAZAK
PS-G51	P2775060	18.8	22	17	12.45	44.1	19.1	M16	45°	for BT40 MAZAK
PS-S2	P2775061	25	39	25	18	95	55	M24	60°	for SHIN NIPPON KOKI
PS-F1	P2775062	23	39	25	18	104	64	M24	45°	for MITSUBISHI
PS-B1	P2775063	22	38	25	16	112	72	M24	60°	for OKUMA
PSS-1	P2506707	19	23	17	14	54	26	M16	75°	for SK40
PSS-5	P2506708	28	36	25	21	74	34	M24	75°	for SK50

- ▶ Upon requests, other pull stud bolts with special dimensions could be produced and supplied.
- ▶ Through hole type ("H" Type) is available upon request.



■ PULL STUD BOLT SPANNER

Unit : mm

MODEL No.	EDP No.	D	L	WEIGHT (kg)	TYPE
PSWB-30	P2775064	27	210	0.30	BT30
PSWB-40	P2775065	37	230	0.40	BT40
PSWB-50	P2775066	49	280	0.78	BT50

PULL STUD BOLT

ANZUGBOLZEN
BOULONS DE SERRAGE
TIRANTI PER MANDRINI UNIVERSALI
TIRANTES PARA PORTAHERRAMIENTAS

APPLICATION TABLE OF PULL STUD BOLT

MACHINE MANUFACTURER	MACHINE MODEL No.	TAPER No.	PS BOLT
DOOSAN	T 4000	BT30	PS-16
	DT 360D	BT30	PS-16
	DNM 400 /500 / 650	BT40	PSS-1
	DNM 750 /40	BT40	PSS-1
	DNM 750 /50	BT50	PS-5
	Mynx 6500	BT50	PS-5
	Mynx 7500	BT50	PS-5
	VM 5400/6500	BT40	PSS-1
	VM 750	BT50	PS-5
	VM 960	BT50	PS-5
	VM 1260	BT50	PS-5
	VC 430	BT40	PSS-1
	VC 510	BT40	PSS-1
	DVM 500	BT40	PSS-1
	DVM 5650	BT40	PSS-1
	NX 4500	BT40	PSS-1
	NX 5500	BT40	PSS-1
	NX 6500	BT40	PSS-1
	NHM 5000	BT50	PS-5
	NHM 6300	BT50	PS-5
	NHM 8000	BT50	PS-5
	NHM 1000	BT50	PS-5
	NHM 1250	BT50	PS-5
	NHP 5000	BT50	PS-5
NHP 6300	BT50	PS-5	
HC 400	BT40	PSS-1	
HC 500	BT40	PSS-1	
WIA	i-CUT 380T/420T	BT30	PS-16
	i-CUT 400T/M	BT30	PS-16
	F 400/500/650	BT40	PS-1
	F 500/650	BT50	PS-5
	F 510M/550M/660M	BT40	PS-1
	F 510B	BT40	PS-1
	F 600B/750B/960B	BT50	PS-5
	KH 50G/63G	BT50	PS-5
	KH 80G/1000	BT40	PS-1
	HS 5000	BT40	PS-1
	HS 5000/6300/8000	BT50	PS-5

MACHINE MANUFACTURER	MACHINE MODEL No.	TAPER No.	PS BOLT	
SEMC	Any Mill LCV30A/B	BT30	PS-17	
	Any Mill LCV55S	BT50	PS-6	
	Any Mill LCV650S	BT50	PS-5	
	Any Mill ICV66	BT50	PS-5	
	Any Mill ICV80	BT50	PS-5	
	DMC-3000	BT50	PS-0	
	PCH40	BT40	PS-1	
	PCH50	BT50	PS-5	
	HWACHEON	SIRIUS-1	BT30	PS-16
		SIRIUS-550	BT40	PS-1
SIRIUS-UL/ULG		BT40	PS-1	
SIRIUS-7040		BT50	PS-0	
SIRIUS-650/650N		BT50	PS-0	
SIRIUS-850/850N		BT50	PS-0	
SIRIUS-700		BT50	PS-0	
SIRIUS-12580		BT50	PS-0	
S&T		TCH-45	BT40	PS-1
		TCH-50	BT50	PS-6
	TCH-80	BT50	PS-6	
	TCH-80TS	BT50	PS-6	
	FX-500H	BT40	PS-2	
	TNV-40A	BT40	PS-1	
	TNV-80A	BT40	PS-1	
	TNV-650V	BT50	PS-6	
	HASS	TM-1/2	BT40	PS-1
		VF-4SS/3SS/2SS	BT40	PS-1
VF-2TR		BT40	PS-1	
VF-5/50TR		BT50	PS-5	
VF-9/50		BT50	PS-5	
MAZAK	VF-8/50	BT50	PS-5	
		BT40	PS-G51	
MORI SEKI		BT50	PS-G41	
		BT40	PS-08	
		BT50	PS-51	

HYDRAULIC CHUCK

SHRINK FIT HOLDER

ER COLLET CHUCK

END MILL HOLDER & SIDE LOCK ARBOR

SHELL MILL ARBOR

POWER MILLING CHUCK

MORSE TAPER ARBOR

SK SLIM CHUCK

SYNCHRO TAPPING CHUCK

ONE STEP TAPPING CHUCK

TAPPING ER CHUCK

TAPPING CHUCK

FACE MILL ARBOR

COPY MILL ARBOR & INDEXABLE DRILL HOLDER

NC DRILL CHUCK & OTHER TOOL HOLDERS

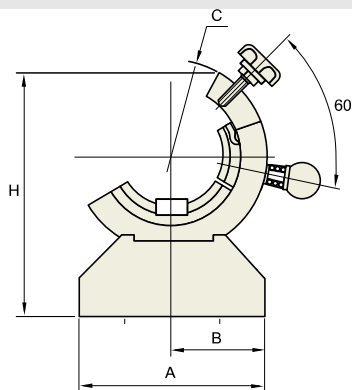
BORING SYSTEM

ACCESSORY & OTHERS



TOOL CLAMP

MONTAGEVORRICHTUNGEN
DISPOSITIF DE MONTAGE
ATTREZZO PER IL MONTAGGIO DI MANDRINI
SOPORTE PARA MONTAJE



• Flange Clamping Design

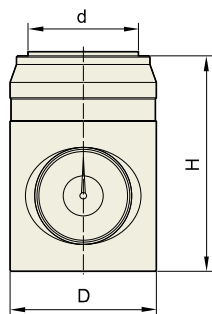
Unit : mm

TAPER No.	MODEL No	EDP No.	A	B	C	H	WEIGHT (kg)
BT30	TCP30	P2775067	125	65	108	135	3.00
BT40	TCP40	P2775068	160	80	138	180	7.60
BT50	TCP50	P2775069	180	90	165	205	8.60
SK30	TSK30	P2775070	125	65	108	135	3.00
SK40	TSK40	P2775071	160	80	138	180	7.60
SK50	TSK50	P2775072	180	90	165	205	8.60
HSK32	THSK32	P2775073	125	65	108	135	-
HSK40	THSK40	P2775074	-	-	-	-	-
HSK50	THSK50	P2775075	-	-	-	-	-
HSK63	THSK63	P2775076	160	80	138	180	-
HSK100	THSK100	P2775077	180	90	165	205	-

► Tool clamp for CAT tepear available.

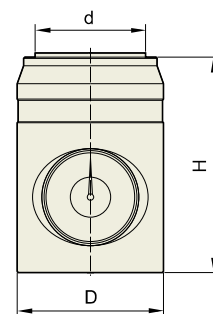
HEIGHT PRESETTER

MAGNETIC HEIGHT PRESETTER



- Both vertical and horizontal type usable
- Slim design

HEIGHT PRESETTER



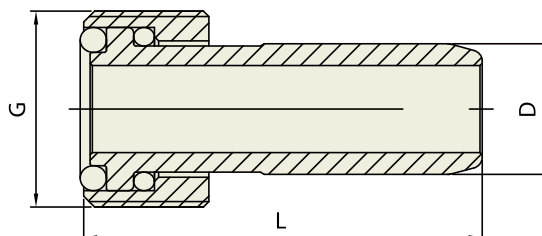
- Exclusively for vertical

Unit : mm

MODEL No.	EDP No.	D	H	d	DIAL
MHP-100 (magnetic)	P2591001	76	100	33	0.01
HP-100	P2775901	68	100 / - 0.01	33	0.01



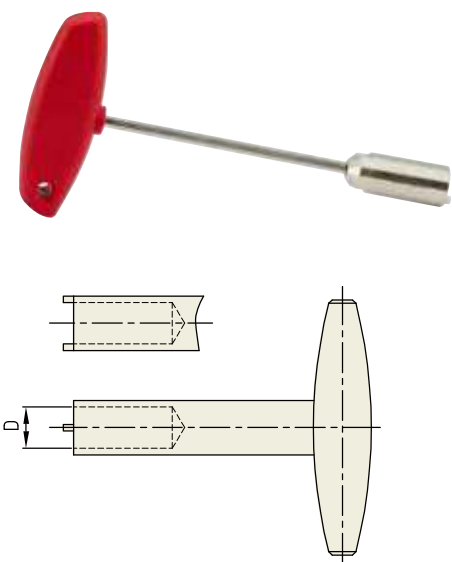
COOLANT TUBE



Unit : mm

TAPER No.	EDP No.	G	D	WEIGHT (kg)
32A	P2775078	M10	6	
40A	P2775079	M12	8	
50A	P2775080	M16	10	
63A	P2775081	M18	12	
80A	P2775106	M20	14	
100A	P2775082	M24	16	

COOLANT TUBE SPANNER



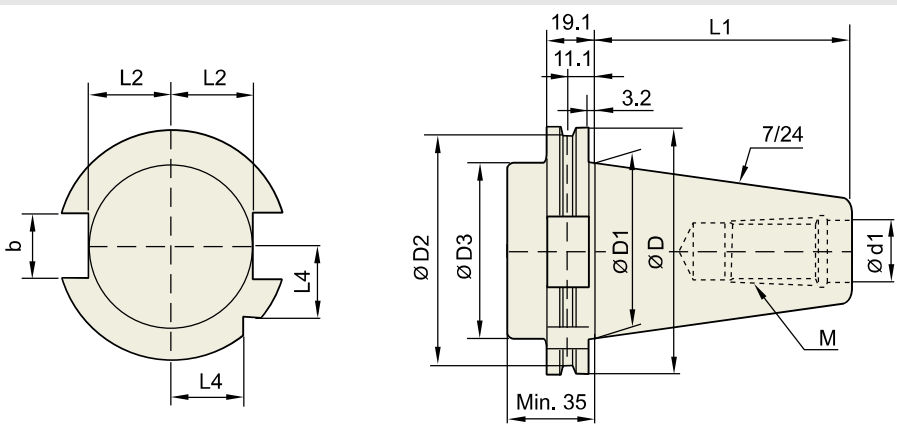
Unit : mm

TAPER No.	EDP No.	D
HSK32	P2775103	6
HSK40	P2775104	8
HSK50	P2775089	10
HSK63	P2775087	12
HSK80	P2775105	14
HSK100	P2775090	16

► Design and shape could be changed without prior notice.

TECHNICAL DATA : SHANK STANDARD

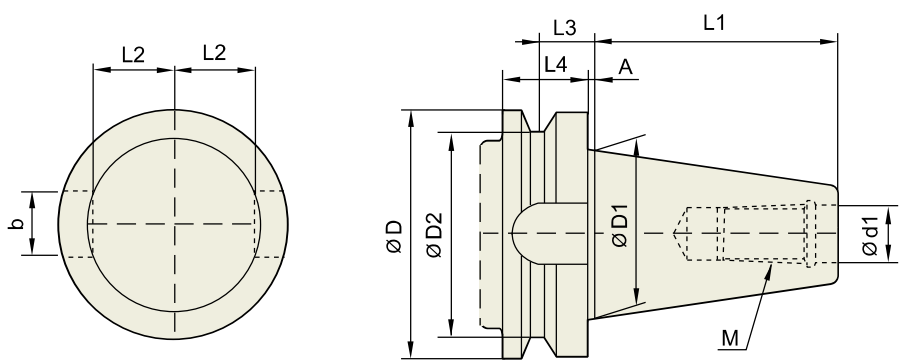
DIN 69871-SK



Unit : mm

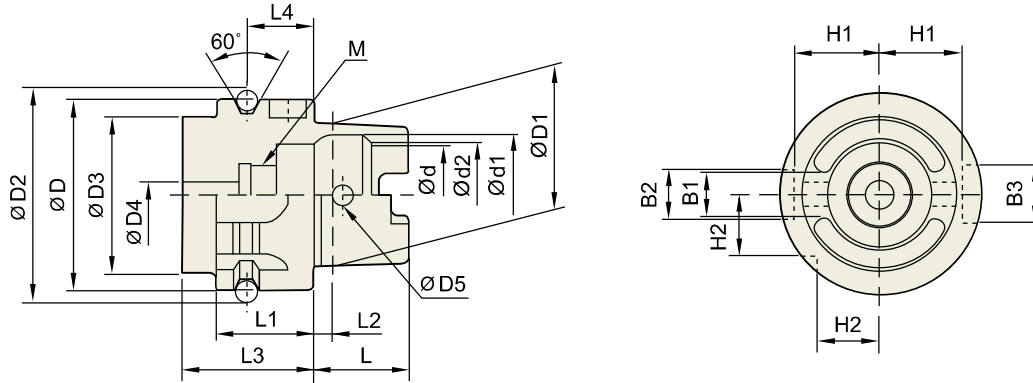
TAPER No.	ØD	ØD1	ØD2	ØD3	Ød1	L1	L2	L3	L4	b	M
SK30	50	31.75	44.3	45	13	47.8	16.4	19	15	16.1	M12×1.75
SK40	63.55	44.45	56.25	50	17	68.4	22.8	25	18.5	16.1	M16×2.0
SK50	97.5	69.85	91.25	80	25	101.75	35.5	37.7	30	25.7	M24×3.0

**JIS B6339/
MAS 403-BT**



Unit : mm

TAPER No.	ØD	ØD1	ØD2	Ød13.	L1	L2	L3	L4	A	b	M
BT30	46	31.75	38	12.5	48.4	16.3	13.6	20	2	16.1	M12×1.75
BT40	63	44.45	53	17	65.4	22.6	16.6	25	2	16.1	M16×2
BT50	100	69.85	85	25	101.8	35.4	23.2	35	3	25.7	M24×3
BT60	155	107.95	135	31	161.8	60.1	28.2	45	3	25.7	M30×3.5

TECHNICAL DATA : SHANK STANDARD
**DIN 69893/
ISO12164-1-HSK**


Unit : mm

TAPER No.	ØD	ØD1	ØD2	ØD3	ØD4	ØD5	L	L1	L2	L3	L4
HSK32A	32	24	37.00	26	4.2	4.0	16	20	3.2	35	16
HSK40A	40	30	45.00	34	5.0	4.6	20	20	4.0	35	16
HSK50A	50	38	59.30	42	6.8	6.0	25	26	5.0	42	18
HSK63A	63	48	72.30	53	8.4	7.5	32	26	6.3	42	18
HSK80A	80	60	88.8	68	10.2	8.5	40	26	8	42	18
HSK100A	100	75	109.75	85	12.0	12.0	50	29	10.0	45	20

Unit : mm

TAPER No.	Ød	Ød1	Ød2	B1	B2	B3	H1	H2	L4
HSK32A	17	20.5	19	7.05	7	9	13.0	9.5	M10×1.0
HSK40A	21	25.5	23	8.05	9	11	17.0	12.0	M12×1.0
HSK50A	26	32.0	29	10.54	12	14	21.0	15.5	M16×1.0
HSK63A	34	40.0	37	12.54	16	18	26.5	20.0	M18×1.0
HSK80A	42	50	46	16.04	18	20	34	25	M20×1.5
HSK100A	53	63.0	58	20.02	20	22	44.0	31.5	M24×1.5

 HYDRAULIC
CHUCK

 SHRINK FIT
HOLDER

 ER COLLET
CHUCK

 END MILL
HOLDER &
SIDE LOCK
ARBOR

 SHELL MILL
ARBOR

 POWER
MILLING
CHUCK

 MORSE
TAPER
ARBOR

 SK SLIM
CHUCK

 SYNCHRO
TAPPING
CHUCK

 ONE STEP
TAPPING
CHUCK

 TAPPING
ER CHUCK

 TAPPING
CHUCK

 FACE MILL
ARBOR

 COPY MILL
ARBOR &
INDEXABLE
DRILL HOLDER

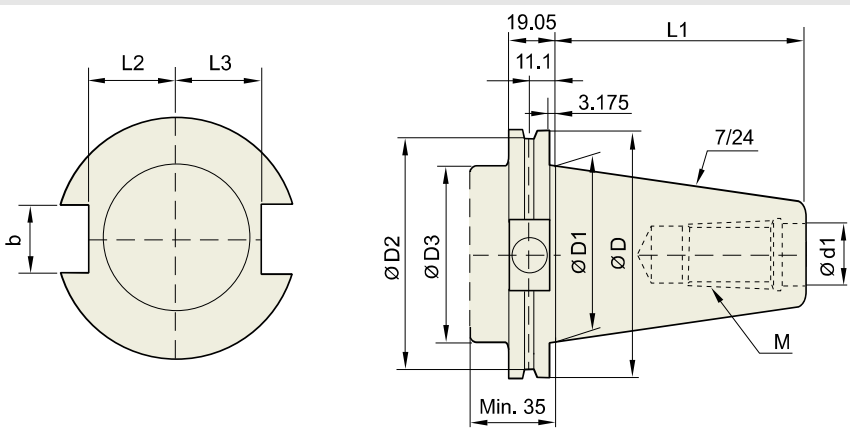
 NC DRILL
CHUCK &
OTHER TOOL
HOLDERS

 BORING
SYSTEM

 ACCESSORY
& OTHERS

TECHNICAL DATA : SHANK STANDARD

ANSI/ ASME B5.50-CAT (OLD : 1978)



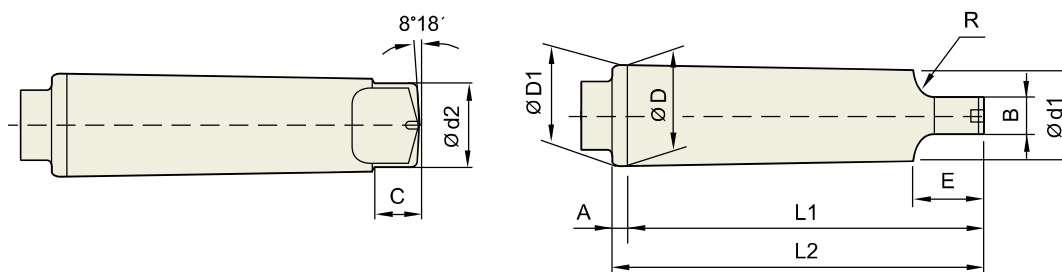
Unit : mm

TAPER No	ØD	ØD1	ØD2	ØD3	Ød1	L1	L2	L3	b	M
CAT30	50	31.75	44.3	31.75	13	47.625	16.25	18.67	16.1	UNC1/2-13
CAT40	63.55	44.45	56.25	44.45	17	68.25	22.60	25	16.1	UNC5/8-11
CAT50	97.5	69.85	91.25	70.1	25	101.6	35.3	37.7	25.7	UNC1-18
CAT60	155	107.95	132.56	108	32	161.93	54	59.3	25.7	UNC1,1/4-7

ANSI/ ASME B5.50-CAT (NEW : Revision 2009)

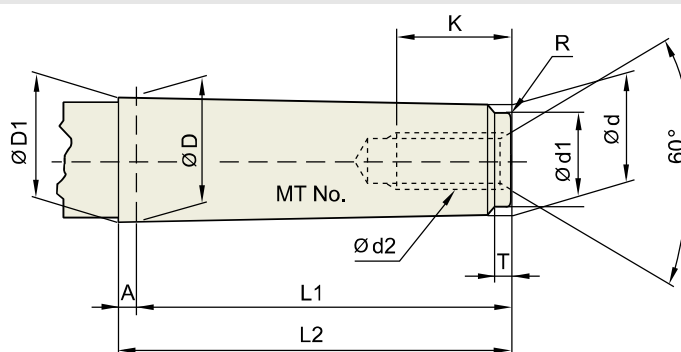
Unit : mm

TAPER No.	ØD	ØD1	ØD2	ØD3	Ød1	L1	L2	L3	b	P	M
CAT30	46.02	31.75	38.89	46.02	13	47.625	16.25	18.67	16.1	-	UNC1/2-13
CAT40	63.5	44.45	56.36	63.5	17	68.25	22.6	25	16.1	-	UNC5/8-11
CAT50	98.43	69.85	91.29	98.43	25	101.6	35.3	37.7	25.7	-	UNC1-18
CAT60	139.7	107.95	132.56	139.7	32	161.93	54	59.3	25.7	-	UNC1 1/4-7

TECHNICAL DATA : SHANK STANDARD
**DIN 228 (MORSE TAPER)
TANG TYPE (MTA)**


Unit : mm

TAPER No.	TAPER RATIO (Rad)	TAPER ANGLE (α)	ØD	A3	ØD1	Ød1	L1	L2	Ød2	B	C	E	R
MT0	1/19.212	1°29'27"	9.045	3	9.045	6.104	56.5	59.5	6.0	3.9	6.5	10.5	4
MT1	1/20.047	1°25'43"	12.065	3.5	12.065	8.972	62.0	65.5	8.7	5.2	8.5	13.5	5
MT2	1/20.020	1°25'50"	17.780	5	17.780	14.034	75.0	80.0	13.5	6.3	10	16	6
MT3	1/19.922	1°26'16"	23.825	5	23.825	19.107	94.0	99.0	18.5	7.9	13	20	7
MT4	1/19.254	1°29'15"	31.267	6.5	31.267	25.164	117.5	124.0	24.5	11.9	16	24	8
MT5	1/19.002	1°30'26"	44.399	6.5	44.399	36.531	149.5	156.0	35.7	15.9	19	29	10
MT6	1/19.180	1°29'36"	63.348	8	63.348	52.399	210.0	218.0	51.0	19.0	27	40	13
MT7	1/19.231	1°29'22"	83.058	10	83.058	68.186	286.0	296.0	66.8	28.6	35	54	19

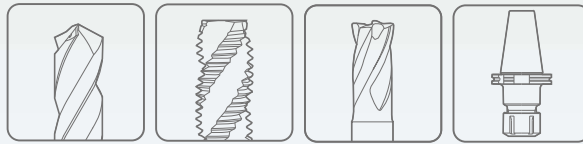
**DIN 228 (MORSE TAPER)
SCREW TYPE (MTB)**


Unit : mm

TAPER No.	TAPER RATIO (Rad)	TAPER ANGLE (α)	ØD	A	ØD1	d	L1	L2	Ød1	d2	K	T	R
MT0	1/19.212	1°29'27"	9.045	3	9.201	6.442	50	53	6.4	-	-	4	0.2
MT1	1/20.047	1°25'43"	12.065	3.5	12.230	9.396	53.5	57	9.4	M6	16	5	0.2
MT2	1/20.020	1°25'50"	17.780	5	18.030	14.583	64	69	14.6	M10	24	5	0.2
MT3	1/19.922	1°26'16"	23.825	5	24.076	19.759	81	86	19.8	M12	28	7	0.6
MT4	1/19.254	1°29'15"	31.267	6.5	31.605	25.943	102.5	109	25.9	M16	32	9	1
MT5	1/19.002	1°30'26"	44.399	6.5	44.741	37.584	129.5	136	37.6	M20	40	9	2.5
MT6	1/19.180	1°29'36"	63.348	8	63.765	53.859	182	190	53.9	M24	50	12	4
MT7	1/19.231	1°29'22"	83.058	10	83.578	70.058	250	260	70.0	M33	80	18.5	5



Global Cutting Tool Leader **YG-1**





HEAD OFFICE

13-40, Songdogwahak-ro 16beon-gil, Yeonsu-gu, Incheon 21984, South Korea

Notice YG-1 Global head office is relocating from December 2020 to a new address as above;

Phone: +82-32-526-0909

Https://www.yg1.kr **E-mail:** yg1@yg1.kr

Note The information is provided for reference only. Tool specifications are subject to change without prior notice. Although we endeavor to supply accurate and timely information, there can be no guarantee to cover every particular application. YG-1 or publishers are not liable for any damage for use of the information.



Search 'YG-1' on social media outlets

YG1YE211020002-1