

## YG-1 TOOLING SYSTEM

# SYNCHRO TAPPING CHUCK

- SYNCHRO GEWINDESCHNEIDFUTTER
- SYNCHRO TARAUDER
- SINCRO MANDRINI PER MASCHIATURA
- ROSCADORES SYNCHRO



### SYNCHRO TAPPING CHUCK (ERTYPE)

DIN 69871-SK

DIN 69893/ISO 12164-1-HSK

JIS B6339/MAS 403-BT

STRAIGHT-K

### SYNCHRO TAPPING CHUCK (QUICK CHANGETYPE)

DIN 69871-SK

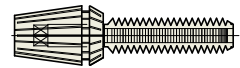
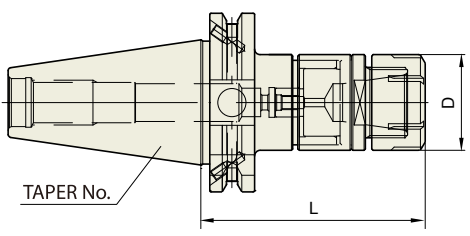
DIN 69893/ISO 12164-1-HSK

STRAIGHT-K

**SYNCHRO TAPPING CHUCK (ER TYPE)**

**DIN 69871-SK**

SYNCHRO GEWINDESCHNEIDFUTTER (ER)  
 SYNCHRO TARAUDER (ER)  
 SINCRO MANDRINI PER MASCHIATURA (ER)  
 SINCRO PORTAMACHOS (ER)



ER collet refer to page 103-107  
 Tap ER collet refer to page 108-109

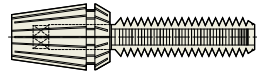
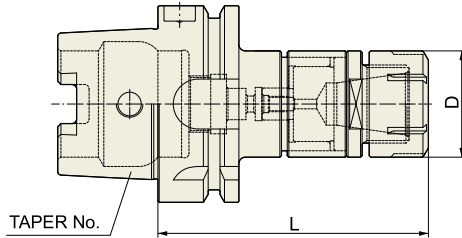
							Unit : mm
TAPER No.	MODEL No.	EDP No.	TAP SIZE	NUT	D	L	WEIGHT (kg)
40	SK40AD/B-SYTER12-79	P2773701	M3-M12	ER16	28	79	1.00
	SK40AD/B-SYTER16-85	P2773702	M3-M16	ER20	34	85	1.08
	SK40AD/B-SYTER20-90	P2773703	M3-M20	ER25	42	90	1.08
	SK40AD/B-SYTER27-100	P2773704	M4-M27	ER32	50	100	1.37
	SK40AD/B-SYTER33-120	P2773705	M4-M33	ER40	63	120	2.16
50	SK50AD/B-SYTER12-79	P2773706	M3-M12	ER16	28	79	2.83
	SK50AD/B-SYTER16-85	P2773707	M3-M16	ER20	34	85	2.86
	SK50AD/B-SYTER20-90	P2773708	M3-M20	ER25	42	90	2.87
	SK50AD/B-SYTER27-100	P2773709	M4-M27	ER32	50	100	3.04
	SK50AD/B-SYTER33-105	P2773710	M4-M33	ER40	63	105	3.93

- Feature :
- To compensate for synchronization errors to extend tap life and to improve thread quality
  - To compensate for pitch tolerances of taps
  - For machine with synchronized spindle
- CAT(ANSI B5.50) taper and Inch type products are available.

HYDRAULIC CHUCK  
 SHRINK FIT HOLDER  
 ER COLLET CHUCK  
 END MILL HOLDER & SIDE LOCK ARBOR  
 SHELL MILL ARBOR  
 POWER MILLING CHUCK  
 MORSE TAPER ARBOR  
 SK SLIM CHUCK  
 SYNCHRO TAPPING CHUCK  
 ONE STEP TAPPING CHUCK  
 TAPPING ER CHUCK  
 TAPPING CHUCK  
 FACE MILL ARBOR  
 COPY MILL ARBOR & INDEXABLE DRILL HOLDER  
 NC DRILL CHUCK & OTHER TOOL HOLDERS  
 BORING SYSTEM  
 ACCESSORY & OTHERS

**SYNCHRO TAPPING CHUCK (ER TYPE)**
**DIN 69893/  
ISO 12164-1-HSK FORM A**

SYNCHRO GEWINDESCHNEIDFUTTER (ER)  
SYNCHRO TARAUDER (ER)  
SINCRO MANDRINI PER MASCHIATURA (ER)  
SINCRO PORTAMACHOS (ER)



ER collet refer to page 103-107  
Tap ER collet refer to page 108-109

Unit : mm

TAPER No.	MODEL No.	EDP No.	TAP SIZE	NUT	D	L	WEIGHT (kg)
63A	HSK63A-SYTER16-90	P2773801	M3-M16	ER20	34	90	0.95
	HSK63A-SYTER20-94	P2773802	M3-M20	ER25	42	94	0.95
	HSK63A-SYTER27-105	P2773803	M4-M27	ER32	50	105	1.34

- Feature :
- To compensate for synchronization errors to extend tap life and to improve thread quality
  - To compensate for pitch tolerances of taps
  - For machine with synchronized spindle

 HYDRAULIC  
CHUCK

 SHRINK FIT  
HOLDER

 ER COLLET  
CHUCK

 END MILL  
HOLDER &  
SIDE LOCK  
ARBOR

 SHELL MILL  
ARBOR

 POWER  
MILLING  
CHUCK

 MORSE  
TAPER  
ARBOR

 SK SLIM  
CHUCK

**SYNCHRO  
TAPPING  
CHUCK**

 ONE STEP  
TAPPING  
CHUCK

 TAPPING  
ER CHUCK

 TAPPING  
CHUCK

 FACE MILL  
ARBOR

 COPY MILL  
ARBOR &  
INDEXABLE  
DRILL HOLDER

 NC DRILL  
CHUCK &  
OTHER TOOL  
HOLDERS

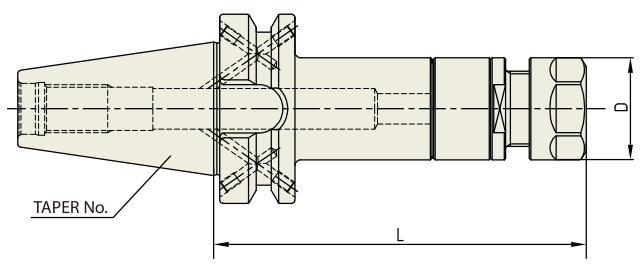
 BORING  
SYSTEM

 ACCESSORY  
& OTHERS

**SYNCHRO TAPPING CHUCK (ER TYPE)**

**JIS B6339/  
MAS 403-BT**

SYNCHRO GEWINDESCHNEIDFUTTER (ER)  
SYNCHRO TARAUDER (ER)  
SINCRO MANDRINI PER MASCHIATURA (ER)  
SINCRO PORTAMACHOS (ER)



ER collet refer to page 103-107  
Tap ER collet refer to page 108-109

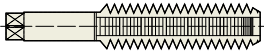
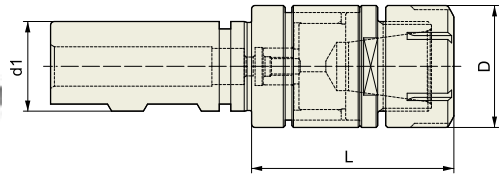
							Unit : mm
TAPER No.	MODEL No.	EDP No.	TAP SIZE	NUT	D	L	WEIGHT (kg)
40	BT40AD/B-SYTER12-79	P2776301	M2-M8	ER16	28	79	1.14
	BT40AD/B-SYTER16-85	P2776302	M3-M10	ER20	34	85	1.17
	BT40AD/B-SYTER20-90	P2776303	M3-M14	ER25	42	90	1.17
	BT40AD/B-SYTER27-100	P2776304	M4-M18	ER32	50	100	1.45
	BT40AD/B-SYTER33-125	P2776305	M8-M24	ER40	63	125	2.40
50	BT50AD/B-SYTER12-100	P2776306	M2-M8	ER16	28	100	3.79
	BT50AD/B-SYTER16-100	P2776307	M3-M10	ER20	34	100	3.79
	BT50AD/B-SYTER20-100	P2776308	M3-M14	ER25	42	100	3.75
	BT50AD/B-SYTER27-110	P2776309	M4-M18	ER32	50	110	3.99
	BT50AD/B-SYTER33-125	P2776310	M8-M24	ER40	63	125	4.75


- Feature :
- To compensate for synchronization errors to extend tap life and to improve thread quality
  - To compensate for pitch tolerances of taps
  - For machine with synchronized spindle
- CAT(ANSI B5.50) taper and Inch type products are available.

HYDRAULIC CHUCK  
SHRINK FIT HOLDER  
ER COLLET CHUCK  
END MILL HOLDER & SIDE LOCK ARBOR  
SHELL MILL ARBOR  
POWER MILLING CHUCK  
MORSE TAPER ARBOR  
SK SLIM CHUCK  
SYNCHRO TAPPING CHUCK  
ONE STEP TAPPING CHUCK  
TAPPING ER CHUCK  
TAPPING CHUCK  
FACE MILL ARBOR  
COPY MILL ARBOR & INDEXABLE DRILL HOLDER  
NC DRILL CHUCK & OTHER TOOL HOLDERS  
BORING SYSTEM  
ACCESSORY & OTHERS

**SYNCHRO TAPPING CHUCK (ER TYPE)**
**STRAIGHT-K**

SYNCHRO GEWINDESCHNEIDFUTTER (ER)  
 SYNCHRO TARAUDER (ER)  
 SINCRO MANDRINI PER MASCHIATURA (ER)  
 SINCRO PORTAMACHOS (ER)



 ER collet refer to page 103-107  
 Tap ER collet refer to page 108-109

Unit : mm

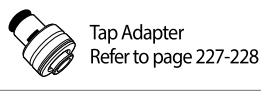
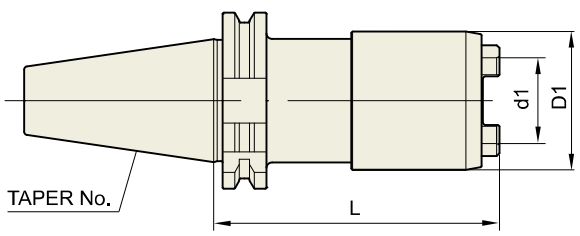
MODEL No.	EDP No.	TAP SIZE	NUT / COLLET	D	L	d1	WEIGHT (kg)
K20-SYTER16	P2773901	M3-M16	ER20	34	58	20	0.33
K25-SYTER16	P2773902	M3-M16	ER20	34	61	25	0.44
K25-SYTER27	P2773903	M4-M27	ER32	50	69	25	0.60

- Feature :
- To compensate for synchronization errors to extend tap life and to improve thread quality
  - To compensate for pitch tolerances of taps
  - For machine with synchronized spindle

- HYDRAULIC CHUCK
- SHRINK FIT HOLDER
- ER COLLET CHUCK
- END MILL HOLDER & SIDE LOCK ARBOR
- SHELL MILL ARBOR
- POWER MILLING CHUCK
- MORSE TAPER ARBOR
- SK SLIM CHUCK
- SYNCHRO TAPPING CHUCK
- ONE STEP TAPPING CHUCK
- TAPPING ER CHUCK
- TAPPING CHUCK
- FACE MILL ARBOR
- COPY MILL ARBOR & INDEXABLE DRILL HOLDER
- NC DRILL CHUCK & OTHER TOOL HOLDERS
- BORING SYSTEM
- ACCESSORY & OTHERS

**SYNCHRO TAPPING CHUCK (QUICK CHANGE TYPE) DIN69871-SK**

SYNCHRO GEWINDESCHNEID-SCHNELLWECHSELFUTTER  
 SYNCHRO TARAUDER À CHANGEMENT RAPIDE  
 SINCRO MANDRINO PER MASCHIARE  
 SINCRO PORTAMACHOS DE CAMBIO RAPIDO



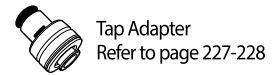
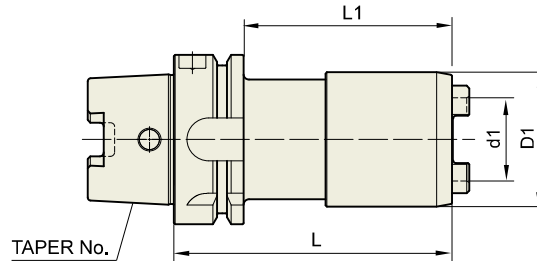
								Unit : mm
TAPER No.	MODEL No.	EDP No.	TAP SIZE	MATCHING INSERTS	d1	D1	L	WEIGHT (kg)
30	SK30-SYTC12-65	P2774207	M3-M12	1	19	36	65	0.50
	SK30-SYTC20-89	P2774208	M6-M24	2	31	50	89	1.00
40	SK40-SYTC12-65	P2774201	M3-M12	1	19	36	65	1.10
	SK40-SYTC20-79	P2774202	M6-M24	2	31	50	79	1.50
	SK40-SYTC33-115	P2774203	M18-M38	3	48	74	115	3.30
50	SK50-SYTC12-65	P2774204	M3-M12	1	19	36	65	3.00
	SK50-SYTC20-79	P2774205	M6-M24	2	31	50	79	3.30
	SK50-SYTC33-115	P2774206	M18-M38	3	48	74	115	5.20

- Feature :
- To compensate for synchronization errors to extend tap life and to improve thread quality
  - To compensate for pitch tolerances of taps
  - For machine with synchronized spindle
- CAT(ANSI B5.50) taper and Inch type products are available.

HYDRAULIC CHUCK  
 SHRINK FIT HOLDER  
 ER COLLET CHUCK  
 END MILL HOLDER & SIDE LOCK ARBOR  
 SHELL MILL ARBOR  
 POWER MILLING CHUCK  
 MORSE TAPER ARBOR  
 SK SLIM CHUCK  
 SYNCHRO TAPPING CHUCK  
 ONE STEP TAPPING CHUCK  
 TAPPING ER CHUCK  
 TAPPING CHUCK  
 FACE MILL ARBOR  
 COPY MILL ARBOR & INDEXABLE DRILL HOLDER  
 NC DRILL CHUCK & OTHER TOOL HOLDERS  
 BORING SYSTEM  
 ACCESSORY & OTHERS

**SYNCHRO TAPPING CHUCK (QUICK CHANGE TYPE)**
**DIN 69893/  
ISO 12164-1-HSK FORM A**

SYNCHRO GEWINDESCHNEID-SCHNELLWECHSELFUTTER  
SYNCHRO TARAUDER À CHANGEMENT RAPIDE  
SINCRO MANDRINO PER MASCHIARE  
SINCRO PORTAMACHOS DE CAMBIO RAPIDO



Unit : mm

TAPER No.	MODEL No.	EDP No.	TAP SIZE	MATCHING INSERTS	d1	D1	L	L1	WEIGHT (kg)
32A	HSK32A-SYTC12-75	P2774314	M3-M12	1	19	36	75	55	0.32
50A	HSK50A-SYTC12-72	P2774315	M3-M12	1	19	36	72	46	0.54
	HSK50A-SYTC20-91	P2774316	M6-M24	2	31	50	91	65	0.70
63A	HSK63A-SYTC12-75	P2774301	M3-M12	1	19	36	75	49	0.82
	HSK63A-SYTC12-80	P2774302	M3-M12	1	19	36	80	54	0.85
	HSK63A-SYTC12-120	P2774303	M3-M12	1	19	36	120	94	1.08
	HSK63A-SYTC12-152	P2774304	M3-M12	1	19	36	152	126	1.27
	HSK63A-SYTC12-180	P2774305	M3-M12	1	19	36	180	154	1.44
	HSK63A-SYTC20-89	P2774306	M6-M24	2	31	50	89	63	0.84
	HSK63A-SYTC33-121	P2774307	M18-M38	3	48	74	121	95	1.45
100A	HSK100A-SYTC12-75	P2774308	M3-M12	1	19	36	75	43	2.20
	HSK100A-SYTC12-160	P2774309	M3-M12	1	19	36	160	131	2.60
	HSK100A-SYTC20-94	P2774310	M6-M24	2	31	50	94	65	2.39
	HSK100A-SYTC20-160	P2774311	M6-M24	2	31	50	160	131	2.99
	HSK100A-SYTC33-127	P2774312	M18-M38	3	48	74	127	98	3.11
	HSK100A-SYTC33-160	P2774313	M18-M38	3	48	74	160	131	4.03

- Feature :
- To compensate for synchronization errors to extend tap life and to improve thread quality
  - To compensate for pitch tolerances of taps
  - For machine with synchronized spindle

 HYDRAULIC  
CHUCK

 SHRINK FIT  
HOLDER

 ER COLLET  
CHUCK

 END MILL  
HOLDER &  
SIDE LOCK  
ARBOR

 SHELL MILL  
ARBOR

 POWER  
MILLING  
CHUCK

 MORSE  
TAPER  
ARBOR

 SK SLIM  
CHUCK

 SYNCHRO  
TAPPING  
CHUCK

 ONE STEP  
TAPPING  
CHUCK

 TAPPING  
ER CHUCK

 TAPPING  
CHUCK

 FACE MILL  
ARBOR

 COPY MILL  
ARBOR &  
INDEXABLE  
DRILL HOLDER

 NC DRILL  
CHUCK &  
OTHER TOOL  
HOLDERS

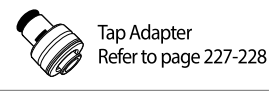
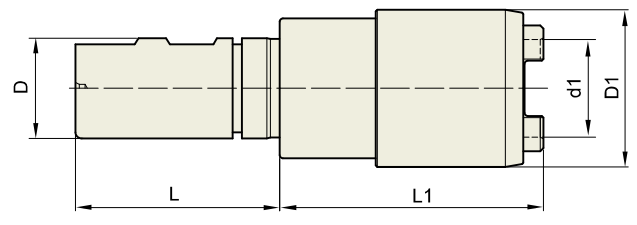
 BORING  
SYSTEM

 ACCESSORY  
& OTHERS

**SYNCHRO TAPPING CHUCK (QUICK CHANGE TYPE)**

**STRAIGHT-K**

SYNCHRO GEWINDESCHNEID-SCHNELLWECHSELFUTTER  
 SYNCHRO TARAUDER À CHANGEMENT RAPIDE  
 SINCRO MANDRINO PER MASCHIARE  
 SINCRO PORTAMACHOS DE CAMBIO RAPIDO



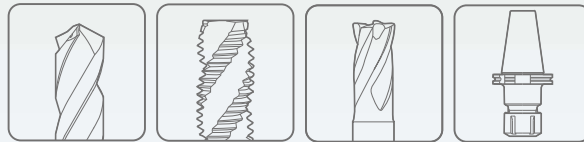
TAPER No.	MODEL No.	EDP No.	TAP SIZE	MATCHING INSERTS	d1	D1	L	L1	D	WEIGHT (kg)
20	K20-SYTC12-46	P2774401	M3-M12	1	19	36	50	46	20	0.28
	K20-SYTC12-107.5	P2774406	M3-M12	1	19	36	50	107.5	20	0.65
25	K25-SYTC12-46	P2774402	M3-M12	1	19	36	56	46	25	0.37
	K25-SYTC20-74	P2774403	M6-M24	2	31	50	56	74	25	0.69
TAPPING CHUCK	K25-SYTC33-107.5	P2774404	M18-M38	3	48	74	56	107.5	25	1.32
	32	K32-SYTC12-74	P2774405	M3-M12	1	31	50	60	74	0.71

- Feature :
- To compensate for synchronization errors to extend tap life and to improve thread quality
  - To compensate for pitch tolerances of taps
  - For machine with synchronized spindle





Global Cutting Tool Leader **YG-1**



# YG-1 CO., LTD.

## HEAD OFFICE

13-40, Songdogwahak-ro 16beon-gil, Yeonsu-gu, Incheon 21984, South Korea

**Notice** YG-1 Global head office is relocating from December 2020 to a new address as above;

**Phone:** +82-32-526-0909

**Https://www.yg1.kr**   **E-mail:** yg1@yg1.kr

**Note** The information is provided for reference only. Tool specifications are subject to change without prior notice.  
Although we endeavor to supply accurate and timely information, there can be no guarantee to cover every particular application.  
YG-1 or publishers are not liable for any damage for use of the information.



Search 'YG-1' on social media outlets